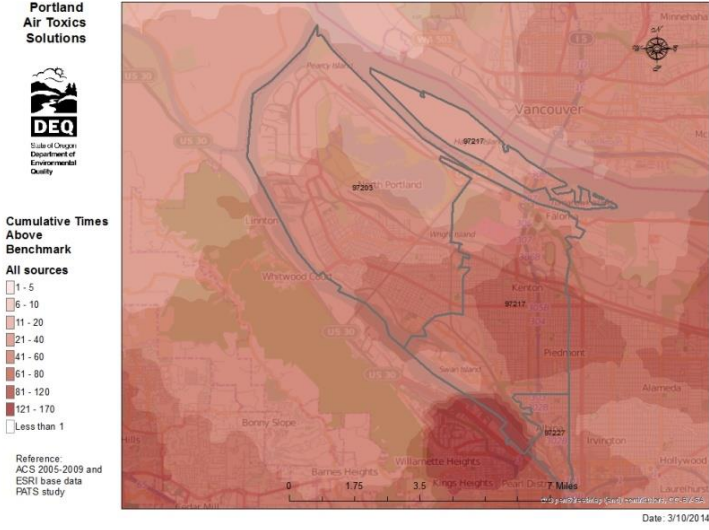




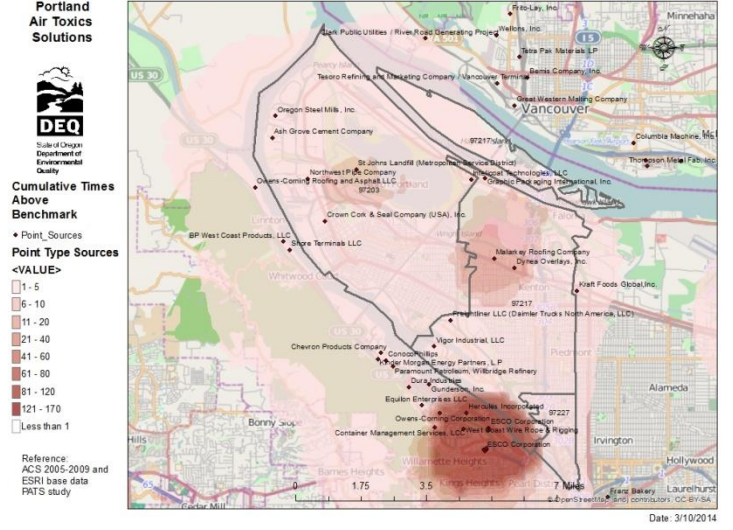
State of Oregon
Department of
Environmental
Quality

PATS 2017 Modeled Emission Maps for Swan Island and North Portland Zip Codes 97227, 97217, 97203 4/2/2014

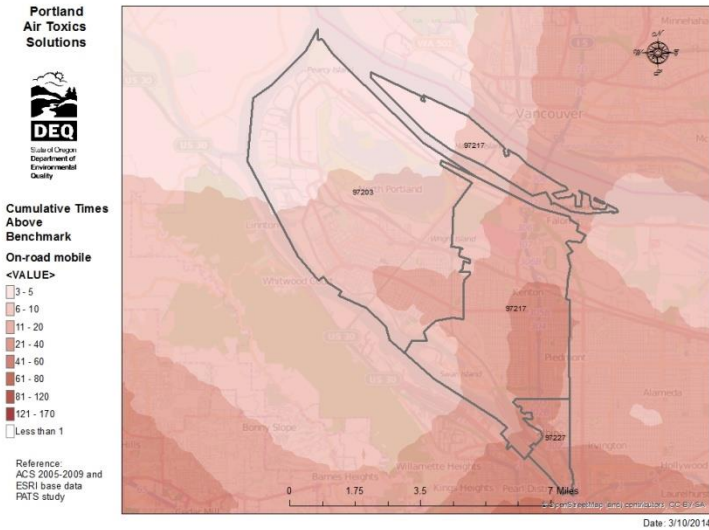
1. All Sources



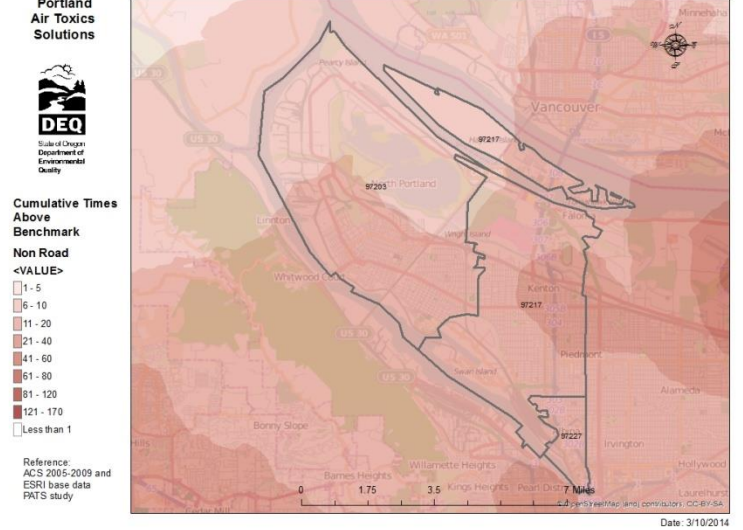
2. Permitted Facilities (emitting one or more of the 19 PATS Pollutants)



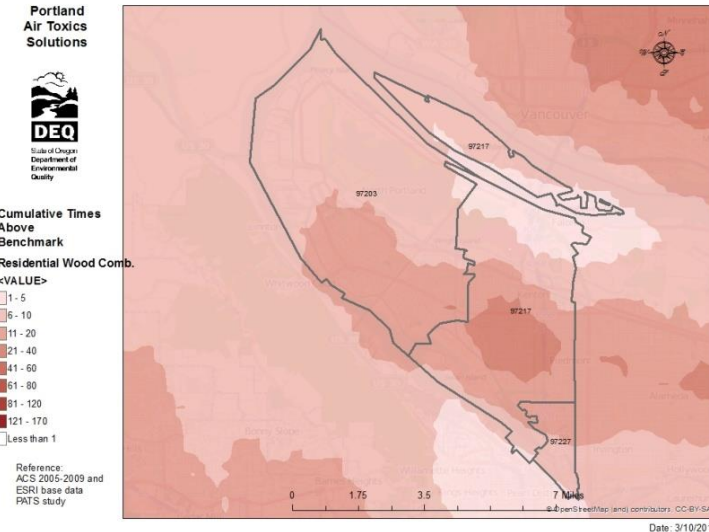
3. On Road Engines



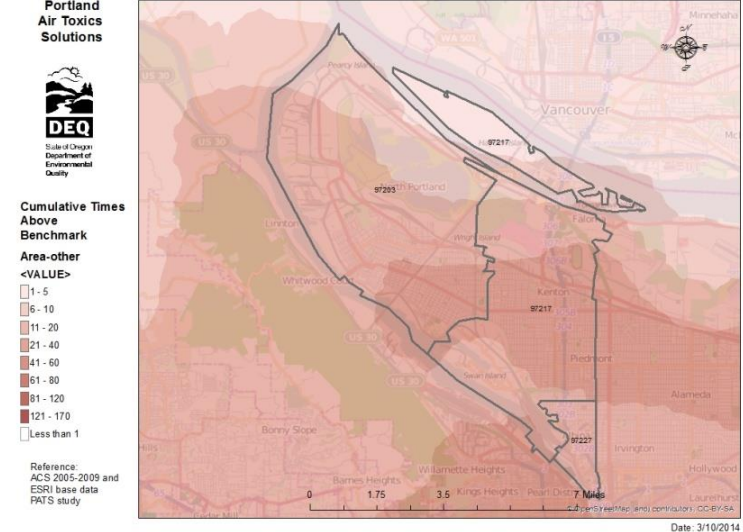
4. Non Road Engines



5. Residential Wood Burning



6. Area Sources



Enlargement of Permitted Facilities PATS Map (2 above)

Portland Air Toxics Solutions



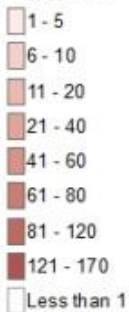
State of Oregon
Department of
Environmental
Quality

Cumulative Times Above Benchmark

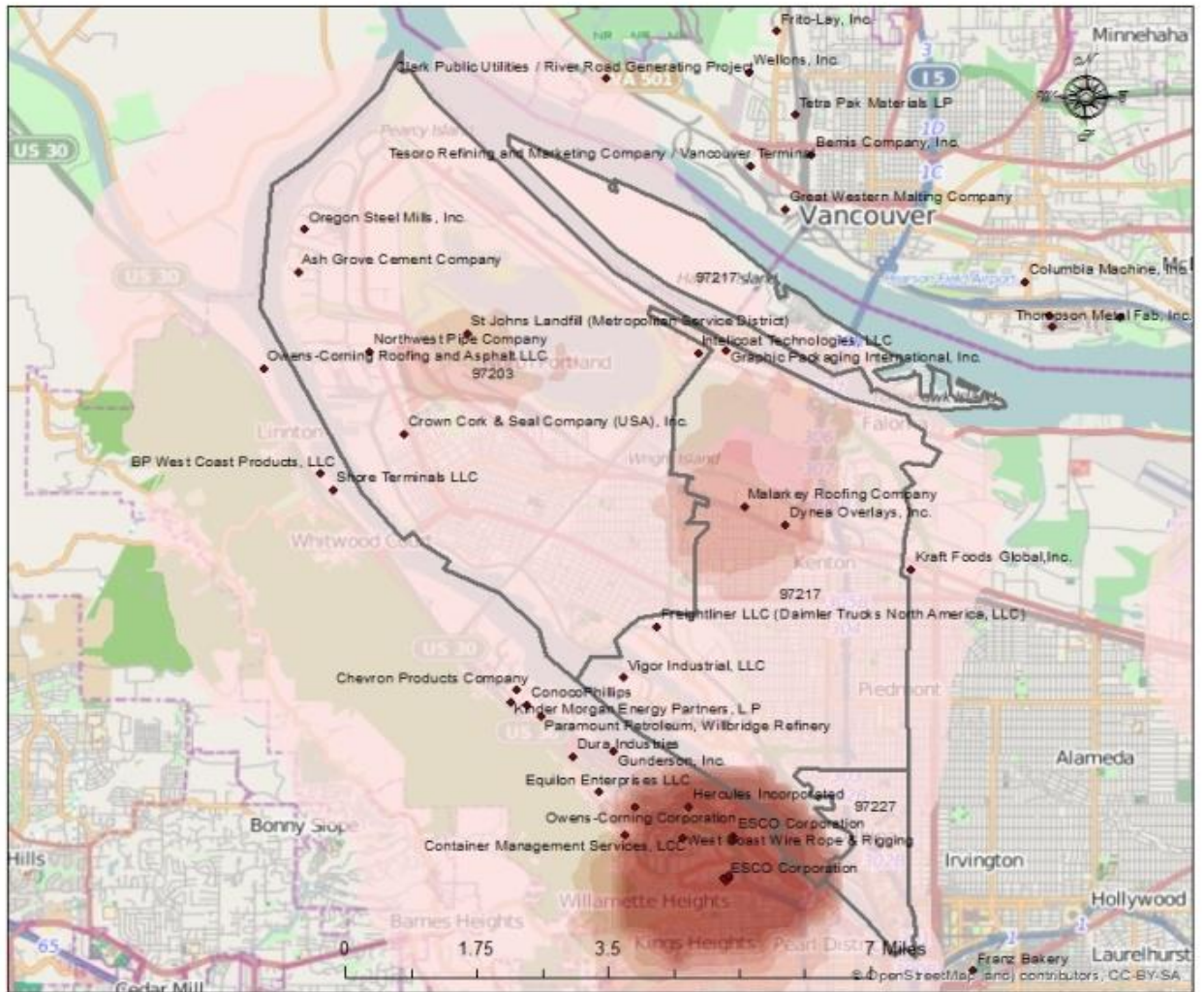
◆ Point_Sources

Point Type Sources

<VALUE>



Reference:
ACS 2005-2009 and
ESRI base data
PATS study



Date: 3/10/2014

Description of PATS sources

Modeled permitted industrial emissions include:

- Stationary Source Fuel Combustion (Natural Gas, Waste Oil, Liquid Petroleum Gas, etc.)
- Metals Facilities (Steel Foundries, Metal Fabrication, Plating etc.)
- Wood Products (Pulp & Paper, Newsprint, etc.)
- Glass Manufacturing
- Petroleum and Gas Distribution and Storage
- Gas Stations
- Asphalt Manufacturing

Modeled area source emissions include:

- Residential open burning
- Residential/commercial/industrial non-permitted fuel use (Heating, Boilers, etc)
- Surface coating (Painting, Traffic Markings)
- Household solvent use (Spray Paints, Cleaners, Auto Aftermarket, etc)
- Consumer products
- Asphalt paving and use

Modeled residential wood burning emissions include:

- Residential fireplaces
- Residential woodstoves

Modeled on-road mobile emissions include:

- Gasoline and diesel cars
- Trucks
- Buses
- Motorcycles

Modeled non-road mobile emissions include:

- Diesel construction equipment
- Lawn and garden equipment
- Aircraft
- Recreational and Commercial Marine
- Rail

Pollutants Modeled in PATS

1,3 butadiene
1,4 Para-Dichlorobenzene
15 PAH
Acetaldehyde
Acrolein
Arsenic compounds
Benzene
Cadmium compounds
Chromium VI
Diesel PM 2.5
Ethylbenzene
Formaldehyde
Lead compounds
Manganese compounds
Methylene chloride
Naphthalene
Nickel compounds
Perchloroethylene
Trichloroethylene

Link to PATS Report:

<http://www.deq.state.or.us/eq/air/pats/patsReport.htm>